



CP EX PUMP - ATEX Certified



Applications:

- Printing machines,
- Painting processes
- CP Ex Pump is used as circulation pump at the zones which required using Ex-proof materials.
- Pump has an Ex-proof electric motor and all components of it are suitable for ATEX certificate.
- Electric motor is easily detachable with a top holder so it allow to easy washing/cleaning of pump parts before paint congeal.
- It is suitable for different paint application by using this detachable type electric motor.

Fluid Specifications:

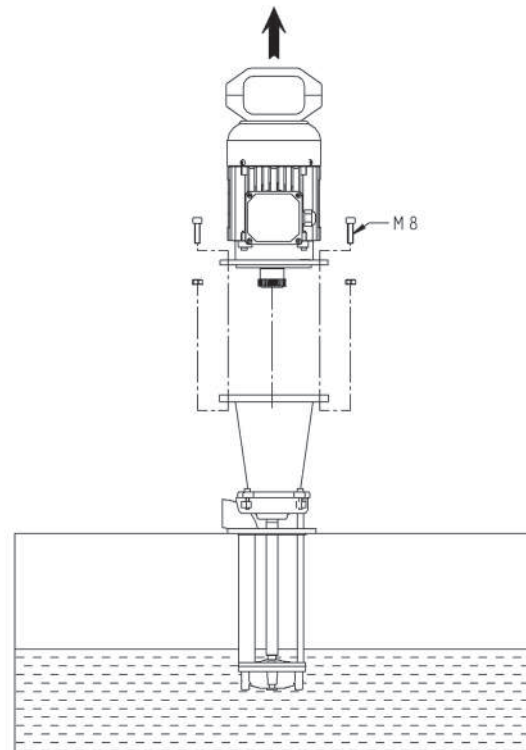
- Paint,
- Ink,
- Fluid temperature 0...60 °C
- Kinematic viscosity 1...90 mm²/s

Materials:

Pump body	: Cast iron - DIN GG 25
Volute	: Cast iron - DIN GG 25
Impeller	: Brass
Pump shaft	: Engineering steel - AISI 1040 (DIN C35)
Electric motor	: 3 phase induction motor 2 pole, 2900 rpm Protection degree IP 55

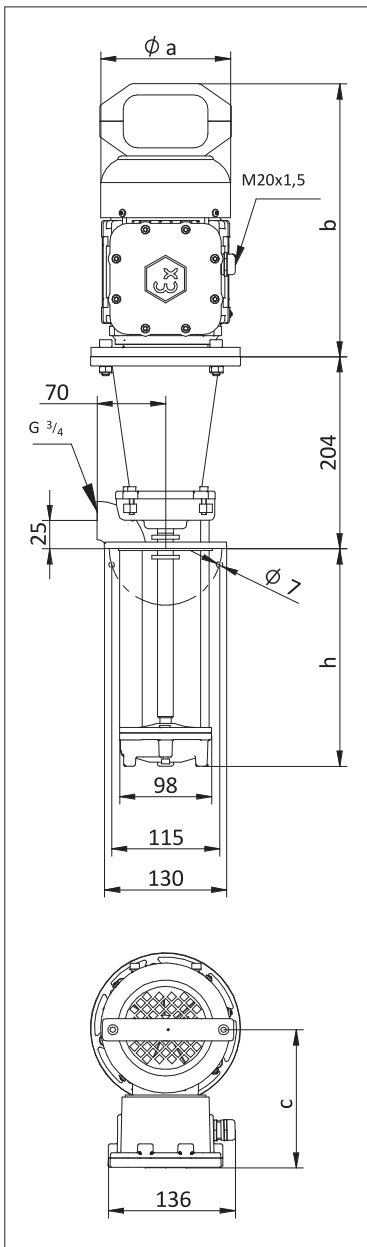


II 2G c IIA T4



CP Ex pump with a detachable electric motor

DIMENSIONS & NOMINAL VALUES



TYPE	Depth of immersion h (mm)	mm			Weight kg	Power kW	Voltage V(Δ/Y)	Frequency Hz	Rated current A	Speed rpm
		a	b	c						
CP Ex 12	130	138	290	147	13.0	0.37	230/400	50	1.9/1.1	2790
CP Ex 17	180				13.3					
CP Ex 22	230				13.5					
CP Ex 27	280				13.9					
CP Ex 35	350				14.5					

* Pump dimensions according to EN 12157.

** The performance curves are based on $1 \text{ mm}^2/\text{s}$ (cSt) kinematic viscosity values and 997 kg/m^3 density

*** Curve tolerance according to ISO 9906:2012 Grade 3B.

Performance Curve

